

ANNUAL REPORT 2020



GROW
WABASH
County

MISSION

Together, Growing a Prosperous Wabash County

VISION

Wabash County will be the model for small town America, making a relevant impact on the global community, by offering vibrant cultural experiences, enriching lifestyles and growing economic opportunities while building on our heritage.

WHO WE ARE

Grow Wabash County is an organization that strategically combines the county-wide economic development organization and Chamber of Commerce. Grow Wabash County is a one-stop-shop for economic and community development efforts. The team focuses on five main areas: Entrepreneurship, Business Development, Workforce Development, Livability, and Investor Services. Grow Wabash County also provides local incentives and other benefits to businesses looking to locate or grow here. Leveraging our community assets with regional partners and local municipalities, Grow Wabash County strives to fulfill our mission of *Together, Growing a Prosperous Wabash County*. The kind of collaboration needed to achieve our mission is possible because when it comes to economic development, Wabash County cities and towns are all in.



Entrepreneurship

Livability

Workforce
Development

Investor
Services

Business
Development



Keith Gillenwater
President & CEO



Tenille Zartman
Vice President



Chelsea Boulrisse
Project Manager



Sarah Delgadillo
Director of Global
Citizenship



Ava Barefoot
Administrative
Assistant

2020 Interns
Landon Topliff
Alex Downard
Ava Barefoot



**THE GROW
WABASH COUNTY
TEAM**



Patty Grant
Community Foundation
of Wabash County
Board Chair



**Marilyn Custer-
Mitchell**
Parkview Wabash
Vice Chair



Gary Larson
Ford Meter Box
Treasurer



Emily Boardman
Crossroads Bank
Secretary



Parker Beauchamp
INGUARD



Jason Callahan
Indiana State Dept.
of Education



Keith Gillenwater
Grow Wabash
County



Lisa Gilman
Redemption
Development, LLC



Brian Hauptert
Wabash County
Commissioner



Bob Krouse
MPS Egg Farms



Doug Lehman
Douglas C. Lehman,
PC



Mayor Scott Long
City of Wabash



Tod Minnich
The Honeywell
Foundation



Adam Penrod
Town of North
Manchester



Patrick Sullivan
Beacon Credit Union



**BOARD OF
DIRECTORS**



A LETTER FROM 2020 BOARD CHAIR, PATTY GRANT

"It was the best of times, it was the worst of times, it was the age of wisdom, it was the age of foolishness, it was the epoch of belief, it was the epoch of incredulity, it was the season of Light, it was the season of Darkness, it was the spring of hope, it was the winter of despair..." - Charles Dickens, A Tale of Two Cities

As in every annual report, we reflect on the past year, and anticipate the new. Times will record the struggles and sorrow that ensued from the global pandemic of 2020. And likely few will ever forget the disappointments and challenges of quarantining, closed businesses and schools, shortages, layoffs, and the unsettling aspect of living with the threat of becoming ill with Covid-19.

And yet, through the trials and uncertainty, there were in 2020 triumphs, champions, silver linings and simple rewards. We can be proud of resilient Wabash County and our perseverance. Health care providers, volunteers, teachers, first responders, and non-profit and government leaders pulled together to support one another and to strategize alternative methods to deliver services. We are inspired by their service. And we can be extremely proud and grateful for the tireless commitment and leadership of Grow Wabash County to serve the needs of our business community.

Through the efforts of Grow Wabash County, over \$600,000 was awarded to Wabash County businesses through Office of Community and Rural Affairs (OCRA) economic development funds, Business in a Box grants, and Rapid Response loans. Securing these funds provided short-term financial assistance to keep citizens employed and paid expenses incurred by businesses to transition workforce to work remotely. In all, Grow Wabash County supported our business community and provided for low and moderate-income families through tough economic times.

And while addressing COVID-related challenges, Grow Wabash County kept a focus on another threat to our County's wellbeing – declining population. In partnership with the Community Foundation and City, Towns and County governments, Grow Wabash County leads efforts through 2021 to develop a comprehensive County-wide plan aimed at growth. The work has begun with Grow Wabash County's vision to address housing, placemaking and livability, engage experts in foreign direct investment to develop business, promote entrepreneurs, and secure funding to advance education and workforce skills and improve access and affordability of quality childcare.

Grow Wabash County's tag, **"Together, Growing a Prosperous Wabash County"** has never meant more, or been so critical as we welcome 2021. We express our appreciation to our investors, partners, and community champions who in 2020 helped paint silver linings and made our progress possible.

We look forward to the best of times **Together—Growing a Prosperous Wabash County**.



A LETTER FROM PRESIDENT/CEO, KEITH GILLENWATER

I am blessed to be asked to speak at various events or otherwise asked to share my thoughts on our community or topics related to Grow Wabash County, economic or community development every year, and each time I try to incorporate a quote that has a particular significance to me or is germane to the current subject I am speaking

about. At our 2020 Grow Wabash County Annual Celebration dinner, as we delved into the topic that had occupied much of everyone's headspace – COVID and the effects on our community, I paraphrased a quote from Oliver Wendell Holmes about recovery, resiliency, and what direction we were moving as we fought to keep our community that we all love so dearly going. As I sit here writing this letter, another quote from an arguably much more well-known author comes to mind.

“Unless someone like you cares a whole awful lot, nothing is going to get better, it's not.”

The quote is from Dr. Seuss in his book *The Lorax*, and I think it best sums up the drive that our community, our local officials, our partners and our Grow Wabash County board and staff have felt since we were all confronted with the challenges brought upon us by the global pandemic. Our mission at Grow Wabash County continues to be Together, Growing a Prosperous Wabash County, and while 2020 challenged us in many ways, I am perhaps more proud of how we reacted to a unprecedented situation than I have been of any previous year in any community I have worked. We care a whole awful lot.

Grow Wabash County has built its mission around five pillars of service: Entrepreneurship, Business Development, Workforce Development, Livability, and Investor Services. It is through these five pillars that we work to serve Wabash County. This report to the community will detail some of the exciting things we worked on under each of those pillars in 2020, as well as a special section detailing Grow Wabash County's COVID-19 response and efforts.

Our collective efforts are paying off. While I lead Grow Wabash County as our organizations President & CEO, I certainly do not do it alone. Together with our dozens of local, regional, and state partners, along with the best professional staff I've had the fortune to work with and a visionary board of directors we ARE moving the needle. Wabash County's per capita personal income experienced a growth of over 3.2% year over year (US BEA), a higher increase than the state average and leading the growth of our 11-county Northeast Indiana region. We celebrated the successful conclusion of our Growth Starts Here campaign, and we pivoted when the community needed us most to provide hundreds of thousands of dollars in grants and loans to our small business community all while staying the course on our important work under our five pillars.

Again, I'm excited for the future of our community, and I am humbled to be a part of it.

Let's keep working to “Grow” Wabash County together!



A handwritten signature in black ink that reads "Keith A. Gillenwater". The signature is written in a cursive, flowing style.



"Growth Starts Here" Capital Campaign: One Year Later

In our 2019 Annual Report, we wrote about the launch of our Growth Starts Here capital campaign. We set a goal of raising \$1,000,000 in additional private sector commitments to help support big-picture initiatives that Grow Wabash County would undertake for the purpose of growing a more prosperous Wabash County.

This included several initiatives under our five pillars:

- **Entrepreneurship**
 - Enhancing our INnovate Wabash County pitch competition
 - Expanding our CO.STARTERS programming and establishing the Wabash County High Schools Entrepreneurship Collaborative across all of Wabash County (formerly INCubatoredu)
- **Business Development**
 - Pursuing a shell building
 - Undertaking the remediation of brownfields in the community
 - Establishing our FDI efforts, and facilitating new investment
- **Workforce Development & Talent Attraction**
 - Training and equipping our legacy workforce for new and emerging technologies
 - Attracting new workforce development opportunities to Heartland Career Center & Ivy Tech Wabash, and enhanced talent attraction efforts to support our employers
- **Livability**
 - Pursuing and implementing the Imagine One 85
 - Spearheaded local housing development efforts
- **Investor Services**
 - Undertaking a comprehensive Wabash County marketing campaign to target business and talent attraction and professional development of GWC Staff

In early 2020, we were proud to announce that we successfully closed our Growth Starts Here campaign! We were thrilled with the overwhelming (and quite humbling) amount of support we received as our initiatives resonated with the community. Since we closed our campaign, we have been hard at work implementing all of our programming.

Updates include:

- Creating Talent Attraction Program Manager position to be filled in 2021.
 - An opportunity arose to share this position that we envisioned as a part-time, project driven opportunity with Wabash Marketplace to make it a full-time position that will split time between our two organizations. We are excited to demonstrate the collaboration and wonderful things that can happen when we cement partnerships with like-minded organizations working for the greater good of our community!
- FDI program expansion through partnerships with Wabash City Schools and the City of Wabash for the Director of Global Citizenship position, trip materials, and development of a European FDI Strategy
- Retail Attraction efforts in conjunction with the City of Wabash
- Brownfield redevelopment efforts and the reimagining of an under-utilized industrial site
- Support for the new Adult Education Center at Heartland Career Center
- Imagine One 85 support
- COVID-19 Business Support relief
- Marketing including the launch of the Business Journal in conjunction with The Paper of Wabash County



**COVID-19
COMMUNITY RESPONSE**

IMPACT SURVEYS

Throughout the pandemic, Grow Wabash County made a point of checking in with the Wabash County business community to see how they were handling the pandemic.

From these business impact surveys, Grow Wabash County was able to shape its own initiatives as well as guide our communities in their plans on how to support their local businesses and labor force.

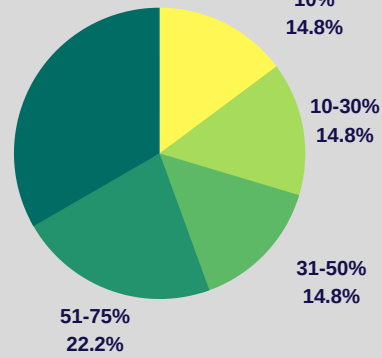
63%

had reduced employee hours
(April 2020)

44%

had laid off employees,
temporarily or permanently
(April 2020)

Overall Revenue Loss
(April 2020)



37%

utilized the COVID-19
Resource page as their
primary info source
(April 2020)



COVID-19 Disaster Assistance & Resources

Grow Wabash County is in regular contact with leaders at the city, county and state level to receive and share the most up to date information regarding COVID-19. We want to be a point of guidance for those looking for directions in how to protect themselves and their employees, how to keep their business afloat and how to be a helping hand to other people and places in our community that need our support during this challenging time.

EARLY RESPONSE

When our leaders at the state and local level called for area businesses, especially retail and restaurants, to close in-person services to "flatten the curve", Grow Wabash County promoted ordering takeout and delivery and shopping locally online by purchasing and giving away gift cards for local small businesses.

We also launched the COVID-19 Resource page to provide the community with up to date information regarding social distancing, funding support and re-opening guidelines.



FINANCIAL SUPPORT

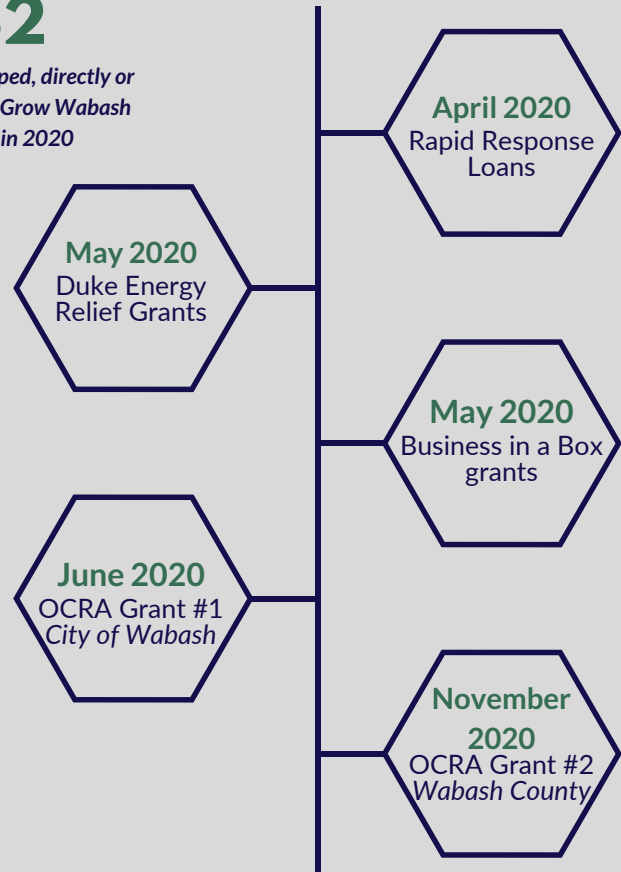
It became evident after a couple weeks that COVID-19 numbers were continuing to spike and businesses were forced to reduce their capacity for customers and staff and/or shut down all together.

Grow Wabash County recognized early that this could have severe repercussions on our small businesses as well as our largest employers. So, we went to work finding ways to provide direct financial support to the Wabash County business community to help keep the lights on and keep Wabash County residents able to work and earn a paycheck.

As a result, Grow Wabash County helped secure over \$600,000 in loans and grant funding from other orgs and agencies to help support the businesses in Wabash County hit hardest during the pandemic.

132

businesses helped, directly or indirectly, by Grow Wabash County in 2020



Additional information about these grants can be found in the "2020 Grants" Section of this report



2020 Grants



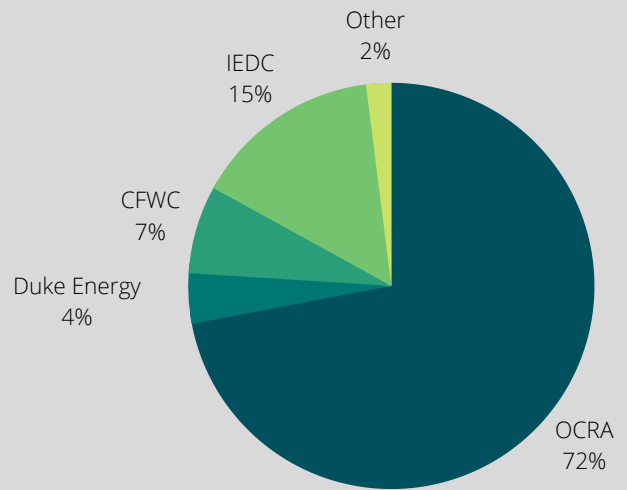


2020 Grants by the numbers

\$627,389

in grant funding secured by Grow
Wabash County

2020 Grant Partners



Grant Awards for 2020

80/20 Wabash County High School Entrepreneurship Collaborative Grant

Grow Wabash County received notice in Dec 2020 that we were approved to receive **\$15,750** in grant funding from the **80/20 Foundation Trust** to launch the **Wabash County High School Entrepreneurship Collaborative** for local students to allow them to utilize the **CO.STARTERS Generator** curriculum, launch a local chapter of the **STARTEedUP** program, and also host the annual **INnovate Wabash County** pitch competition.

Community Foundation of Wabash County

Workforce grants totaling **\$40,794** awarded in 2019 received in 2020 to ensure successful launch of the **Commercial Driver's License (CDL)** program with **Ivy Tech Community College** and **Heartland Career Center** as well as provide scholarships for welding, CNC and/or Industrial Maintenance certification trainings. Due to the pandemic, most of the certification programs were postponed so scholarship funding will be awarded in 2021.

Duke Energy Foreign Direct Investment Grant

Duke Energy helped us to support efforts in 2020 to build relationships with a focus on Asia to create economic opportunities for both our local companies to develop foreign markets but also to bring foreign investment into Wabash County. By helping us to underwrite the development of foreign-language marketing materials, custom locally made gifts to exchange with prospect companies, and our consultants who have helped us develop and strengthen these relationships.

Duke Energy Site Readiness Light Grant

Grow Wabash County has been in the process of developing the **Arc Light Business Park** and secured **\$10,000** from **Duke Energy's** Site Readiness grant program to help make the site more attractive and marketed to potential industries.

Duke Energy Marketing Grant

Grow Wabash County was also fortunate to receive support from Duke Energy regarding our 2020 marketing plans. With these funds, we were able to promote and highlight our Capital Campaign projects and donors, but Duke also gave us the freedom to pivot once the pandemic came along to use the funds for marketing geared at supporting our local business community.

Duke Energy COVID-19 Grants

Webb's Family Pharmacy in North Manchester and **Cannonball Lanes** in Wabash were each awarded **\$2,500** grants through Grow Wabash County on behalf of the **Duke Energy Small Business Support Grants** program for going above and beyond in serving the Wabash County community during COVID-19.

Duke Energy Workforce Grant

\$10,000 was awarded to Grow Wabash County by **Duke Energy** that was then awarded to the **Heartland Career Center** for the construction of their adult certification center, Heartland Learning Center.

Office of Community and Rural Affairs COVID-19 Relief Grants

Phase I

In the midst of the COVID-19 pandemic, Grow Wabash County secured **\$250,000** in COVID-19 grant funding from the Indiana **Office of Community and Rural Affairs** in partnership with the **City of Wabash** to issue business grants out to **48** businesses.

Phase II

Noticing that we still had a great need for funding to retain low and middle income jobs in Wabash County, we secured an additional **\$160,000** in COVID-19 grant funding from the **Indiana Office of Community and Rural Affairs** in partnership with the **Wabash County Commissioners** which also pledged a local **\$40,000** match for a total of **\$200,000** to award business grants out to **42** businesses.

Phase III

At the end of 2020, Grow Wabash County, on behalf of Wabash County has applied for a third phase of grant funding amounting to **\$250,000** from the **Indiana Office of Community and Rural Affairs** to support child care providers in Wabash County. The Community Foundation of Wabash County has also agreed to provide a matching grant of **\$50,000** for child care tuition scholarships for families in need. *Grant announcements will be made in April 2021.*



Wabash County Commissioners & United Fund of Wabash County Grants for "Zoom Room"

When it became evident that the way organizations like Grow Wabash County would have to rethink how we hosted meetings during as well as after the pandemic, Grow Wabash County requested funding from the Wabash County Commissioners to support the creation of a "Zoom Room" which revolutionizes the way GWC and other organizations approach hybrid and virtual meetings.

United Fund of Wabash County COVID-19 Grant

The United Fund of Wabash County has always been a great supporter of Grow Wabash County's many programs and events. When it came time to prepare for the Annual Celebration Dinner in October 2020, the United Fund agreed to award GWC a grant to allow for the purchase of face masks and individual hand sanitizer dispensers to ensure guests at the Annual Dinner as well as future events could feel comfortable attending Grow Wabash County events.



Entrepreneurship





Entrepreneurship *by the numbers*

4

local businesses funded to attend CO.STARTERS programming

17

Business in a Box grants awarded

7/10

spots in the 2020 regional Innovate WithIN competition held by Wabash County students

Indiana Economic Development Corporation Grant - repurposed and closed out

The Indiana Economic Development Corporation grant awarded \$195,032 in entrepreneurship supports to Grow Wabash County in 2018 to be used over a two-year period for the following six areas of focus. *This grant was closed out in 2020.*

INCubatoredu

The Spring 2020 class had 7 students in the InCubatoredu, 2 students in the FreshINCedu, and 11 students in the mxINCedu programs. Due to COVID-19, the in-class portion of this course moved virtual for the remainder of 2019-20 school year. The IncubatorEdu course closed with two business groups that shifted focuses at the onset of COVID-19.

Business in a Box

COVID19 required Grow Wabash County to switch gears and the IEDC grant was amended to move leftover funds from the 3-D printer project, Co.Starters and Messer's Capstone, to provide additional Business in a Box support grants. With \$42,000 freed up from these projects, Grow Wabash County issued 14 additional grants of up to \$3,000 each for Business in a Box supports. In total, Grow Wabash County was able to award 17 Business in a Box Grants, a total 15 of which were during the onset of COVID19, and proved a lifeline for entrepreneurs during the pandemic. Additionally, B.I.B recipients were required to spend the funds with local vendors to ensure money was going to support our Wabash County business community.

Businesses served include: Badger Tool Belts, 950 Speakeasy & Bistro, Hidden Diamond Homes, Hoosier Chiropractic, Flight1 Aviation Technologies, Skyline Business Technology, Green Hat, Bailey's Pizza Parlor, Redemption Development, 10X Engineered Materials, White Rock Recreation, Wabash CrossFit, Black Sheep Event & Design, Precision Medical Technologies, and Main View Inn.

3D Printer at Messer's Lab

In 2019, the IEDC grant previous funded a 3-D printer and supplies that were placed at the Co-Working Space (free and available 24/7 to entrepreneurs) in INGUARD within Messer's Lab. All additional funds in 2020 from this category were reassigned to allow for more Business in Box Grants to help businesses during the pandemic.

Messer's Manchester University Capstone Course

This program was intended for high schoolers that participated in the pitch competition to provide a college-level capstone course in entrepreneurship unfortunately, COVID-19 and other factors did not align to make this course happen. The IEDC team allowed all the remaining funds in this category to be reassigned for more Business in Box Grants.

INnovate Wabash County Pitch Competition

The 2020 INnovate Wabash County competition was cancelled due to the stay-at-home order as a result of COVID-19. Student groups planning to pursue their business ideas were encouraged to apply for Business in a Box grant funding to help them get the ball rolling.

As a result, the funding for this program was applied to the 2021 competition set for **Wednesday, April 28, 2021**. We have since booked and paid for the venue (*Eagle's Theatre's Main Stage and Parkview Ballroom*) and the gift check prizes have been purchased as the following **1st Place** - \$2,000.00; **2nd Place** - \$1,500.00; **3rd Place** - \$1,000.00; **4th Place** - \$500.00.

The 2020 **Innovate WithIN** state competition eventually transitioned to virtual, and 7 Wabash County student groups were able to compete (in-person) at the regional stage of the competition in Fort Wayne at Sweetwater Sound on **Wednesday, March 11, 2020**.

The groups that competed at regionals were:

- **Bizzy Bees, LLC** - Landon Topliff & Alex Winer, Southwood High School
- **Retractable Show Stick** - Riley Shaneberger, Manchester High School
- **iPlanDates** - Sierra Stout & James Kelley, Southwood High School
- **Fix 'em Up Phones** - Gavin Whitaker, Manchester High School
- **WHS Energy** - David Cash Carmichael, Grant Warmuth & Kedrick Judy, Wabash High School
- **Millie&Mabel** - Lillian Herrmann, Manchester High School
- **Katelyn's Vinyl Designs** - Katelyn Hall & Micah Metzger, Heartland Career Center



CO.STARTERS

This entrepreneurship course, normally focused on start-ups and new ideas, changed focus in 2020 to help business rebuild post-pandemic shut down and navigate the "new normal."

Although, Grow Wabash County was not able to hold its traditional CO.STARTERS core programs aimed at startups in 2020, we were instead able to give out 4 scholarships for existing business to attend the virtually-facilitated Rebuild program which helps existing business owners learn strategies such as streamlining costs, handling liability concerns and setting recovery goals.

Scholarships were awarded to: Betty Temple Inc, TAD Holdings Inc, Nancy J's Fabrics, and 380 Smokehouse and Grill.





Workforce Development





Workforce Development *by the numbers*

\$4 million

secured with GWC's help from

**Economic Development
Administration**

17

NXTGen Student graduates

24

**Leadership Development of
Wabash County graduates**

Heartland Career Center's Adult Certification Center Project

The Heartland Learning Center received \$5 million from the Economic Development Administration and Grow Wabash County has been working closely with HLC to raise the required 20% match locally. This expansion will allow our footprint to grow by constructing a **37,000 square foot** building to create an adult education center that will offer advanced manufacturing and health credentials.

Certification Trainings

Due to the pandemic, no certification trainings were held in 2020. Scholarships made possible by the Community Foundation of Wabash County will carry over to be used in 2021 programming.

Young Professionals of Wabash County

The Young Professionals of Wabash County continued to promote connections and professional development, despite the pandemic. Some of its more successful events in 2020 included: Hike at Hathaway Reserves, Blessing in a Backpack volunteer day, Estate Planning Lunch and Learn, Virtual Trivia, Kayaking on Wabash River, virtual Imagine One 85 Workshop, and a river cleanup volunteer day with River Defenders.

The YPWC Steering Committee also utilized the method **Strategic Doing** to complete a newcomers guide and started a welcome letter campaign if new young professionals moved to the area to help them feel welcomed. The group also launched **YPs Helping YPs** as a method to help each other with minor projects. One of the events included several hours of peeling wallpaper together at a YPs new fixer upper and another included getting groceries for YPs during quarantine.



Leadership Development Wabash County

Leadership Development Wabash County is the premier leadership training program for adults in our area. The goal of this eight-month program is to bring together a diverse group of existing and emerging community leaders to develop their leadership skills and enables them to become resourceful stewards of the community. The 2020-21 program was postponed due to COVID-19 with the goal to resume in-person programming in 2021.

On **Wednesday, Aug. 19**, Grow Wabash County graduated 24 participants from the program during a ceremony in Legacy Hall at Honeywell Center. In honor of the LDWC Director, **Jim Smith**, Grow Wabash County announced the creation of the **Jim Smith Scholarship** fund which will pay the tuition of one LDWC participant in each future cohort.

The 2019-2020 LDWC graduates were: Audrey Adams, *Honeywell Foundation*; Chelsea Boulrisse, *Grow Wabash County*; Angela Braden, *Purdue Extension Wabash County*; Melissa Ford, *Community Foundation of Wabash County*; Megan Frank, *Ford Meter Box*; Justin Gillespie, *Ford Meter Box*; Rebecca Haynes, *Ford Meter Box*; Stacy Herrold, *Wabash City Schools*; Jody Long, *Midwest Eye Consultants*; Teresa Miller-King, *Bulldog Battery*; Tiffany Moore, *Living Well in Wabash County*; Jared Osborne, *Pizza King*; Alison Pershing, *Parkview Wabash Hospital*; Cindy Peters, *Parkview Wabash Hospital*; Beth Phillipy, *Wabash City Schools*; Bev Ramey, *Real Alloy Recycling*; Zach Schaaf, *Ford Meter Box*; Ashlie Schlemmer, *Bowen Center*; Jana Thibos, *Honeywell Foundation*; Tarrence Trusty, *Investment Center at Crossroads Bank*; Nicole Weirick, *Beacon Credit Union*; Erika White, *Midwest Eye Consultants*; Tom Wilson, *Hoosier Jiffy Print*; and Ray Wiser, *Real Alloy*.



NXTGen Student Leadership

NXTGen is a program aimed at high school sophomores who are both self-identified and acknowledged by school administrators as having high potential to both provide more current leadership within the school(s) as well as future leadership in the county and region. The one-semester program includes four full days of interaction and presentations as well as community service projects. NXTGen Leadership Academy's inaugural class graduated 15 students.

Two groups of 20-24 students will be chosen to participate each semester. Applications will be taken in April for participation during the 2021-2022 school year. Participants will be chosen based on the quality of their application and recommendations from school personnel. Participants will be chosen from all four public high schools.





Business Development





Business Development *by the numbers*

\$602, 488

in direct financial support

awarded to **117**

Wabash County businesses

Rapid Response Loans

In order to help some of our investors bridge the gap during this low- to no-revenue timeframe by opening applications for Rapid Response loans with funding available through Grow Wabash County's Revolving Loan Fund. The loans recipients received up to \$7,500 with a 1% interest rate that would allow them to cover costs connected to working capital, payroll expenses, preventing staffing cuts and/or other expenses incurred due to COVID-19.

Loans were awarded to: Bellazo; Eclectic Shoppe; Ellen's Bridal & Dress Boutique; Harry's Old Kettle Pub & Grill; Helping Touch Massage; Hometown Media, Inc.; Nancy J's Fabrics; Uptown VR; Wabash CrossFit and Fitness; 380 Smokehouse & Grill; and 95.9 KISS FM – WKUZ Radio

Site Selection Attraction efforts

Despite the ability to travel being mostly non-existent, Grow Wabash County continued our traditional site selection and attraction efforts in 2020. We connected with dozens of companies and site selection consultants throughout the year.

As part of our Growth Starts Here campaign commitment, we undertook a lead development contract with an economic development consultant who provided twelve high quality leads for companies looking to expand that would consider Wabash County as a location. These leads represented both domestic and foreign companies from across Europe, North America, and India. We continue to develop relationships with these companies.

We also met with over 30 site selection consultants throughout the year, both in person in Dallas in December 2020 as well as virtually through Zoom and other means. We also hosted one large business prospect to our community twice in 2020, and we continue to remain on the companies short list for sites.

In late 2020 we contracted with another site selection consultant with a strong European presence who was previously familiar with Wabash County to help us further develop our European foreign direct investment strategy, and that work kicked off in earnest in January 2021. We are hopeful that the new year will provide a return to more normal meetings as face-to-face interaction is a key factor in building a relationship with prospect companies and site selection consultants alike.

Arc Light Business Park

With the passage of the federal Tax Cuts and Jobs Act in 2016, a new community and economic development incentive was created through the establishment of the Opportunity Zones program.

Wabash County has one Census tract located in the City of Wabash that is designated an Opportunity Zone, and Grow Wabash County has been working to use this new tool to attract new investment to our community. In conjunction with Wabash County Government, the Wabash County Redevelopment Commission (staffed by Grow Wabash County staff) and Grow Wabash County have worked to develop the new Arc Light Business Park at the site of the former County Farm at the southeast corner of US 24 & IN-13.

We were assisted by Duke Energy who selected Wabash County as a 2020 partner in the Duke Site Ready program, which helps us to develop the site by engaging with Banning Engineering to examine the site and help us determine the best uses of the site.

Ultimately, the southern third of this site will house the new Wabash County Jail, but the northern 2/3 of this site will be developed into a new business park. Our first prospect was set to build in this park in early 2020 but their project was delayed by the COVID-19 pandemic. We continue to work on this project and hope to have it move forward in 2021.

Brownfield Redevelopment efforts

Grow Wabash County, in conjunction with the City of Wabash, continues to spearhead our brownfield redevelopment efforts. Since the formation of Grow Wabash County (and before us by our former name EDG of Wabash County) we have worked to identify and remediate brownfield sites to put them back into a higher and better use in our community.

A brownfield is defined by the Oxford dictionary as a “former industrial or commercial site where future use is affected by a real or perceived environmental contamination.”

In this case, we have active efforts underway with the former Sposeep properties in downtown Wabash and the former General Tire/GDX site on Stitt Street in Wabash. These build upon our successful efforts to remediate and redevelop the former Brown Trucking, Containers Corporation, and other sites in Wabash County.

We are indebted to the City of Wabash and Mayor Scott Long, the Indiana Department of Environmental Management, the Indiana Brownfields Program, and other community partners who have assisted in these redevelopment efforts.

North Manchester Industrial Park

Building upon our efforts to develop the North Manchester Industrial Park, and to continue our Duke Site Ready efforts in the park in 2019, in 2020 Grow Wabash County engaged Banning Engineering to further develop the GIS-based interactive site map in the park.

This added layer to our site map (***found at www.growwabashcounty.com/sites-buildings***) added a feature to determine the zoned and actual uses of surrounding properties within a half-mile of the property, which is important for a new business prospect looking at developing in the park.

We will continue to build upon this and other tools to best position the North Manchester Industrial Park for future development.



Foreign Direct Investment Efforts

As we wrote about in our 2019 Annual Report, Grow Wabash County continues to expand upon our efforts to bring foreign direct investment into Wabash County as well as create opportunities for our own businesses to create additional markets and partnerships overseas.

While the COVID-19 pandemic put a damper on our efforts with the worldwide travel restrictions we continued to work to develop our relationships with foreign businesses.

Sister City Development

In early 2020, before the pandemic took hold in the US we were planning a fall trip with a number of community delegates to Japan and China. While in Japan, the intention was and remains to be to build upon the relationships Grow Wabash County and its many partners have worked to establish throughout 2018 and 2019, including a visit to Yamate Gakuin school, various business prospects and an industry trade show.

In China we planned to work to formalize our Sister City Relationship with Linhai City and would meet several prospects who we are working to help establish a Wabash County presence. While we were unable to travel, we were able to meet with several prospects electronically and keep up our communication efforts going with our counterparts in Linhai City. We look forward to returning when global travel resumes safely.

Japan - Northeast Indiana Summit

In a further effort to build upon our Japanese relationships, Grow Wabash County's Sarah Delgadillo took over hosting and convening duties from the Northeast Indiana Regional Partnership for the 2020 Japan/NE IN Summit on Dec 8, 2020.

While this year's summit was held virtually, we welcomed several participants from around the world as speakers and attendees. We also partnered with Consul General of Japan Kenichi Okada as well as the Japan-American Society of Indiana to host our event. Grow Wabash County plans to host the 2021 event live and in-person in Wabash County as travel permits.

Consul-General of Japan visit

In fall of 2020, we were honored to assist with hosting a visit from Consul General Kenichi Okada from the Japanese Consulate in Chicago.

CG Okada visited with our new Japanese language class at Wabash City Schools where he engaged in an open Q&A session with students, then attended an assembly at the school where he presented a \$30,000 check from the Japan Foundation to help underwrite the program. CG Okada then took a tour of the City, and rode in the Wabash High School Homecoming parade before finishing the evening with a private reception at the Eagles Theatre.

CG Okada's visit was the first visit of a sitting Consul General to Wabash, and is the second visit to Wabash County that we have arranged since 2017. As we work to build these important relationships in Japan and to support our Japanese partners at Oji Intertech, we are also building our communities capacity to welcome this investment and improve the prospects for our future.



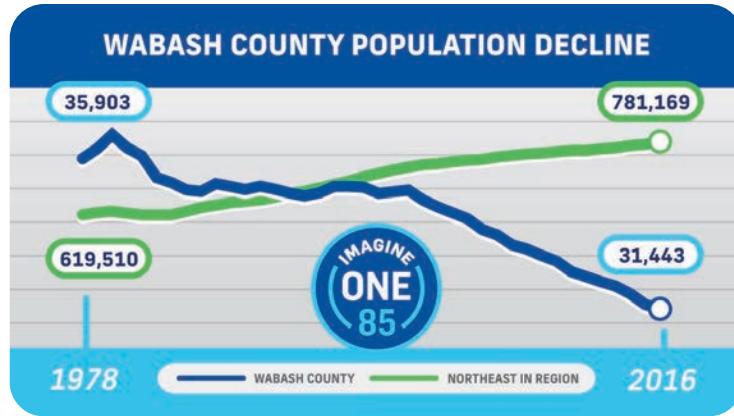


Livability





Livability



Imagine One 85

By now, you have likely seen the above graph, heard one of our many presentations, and/or partaken in one of our online or in-person Focus on the Future workshops.

The Imagine One 85 initiative was born out of a study of Wabash County's population dynamics that was jointly undertaken by Grow Wabash County and the Community Foundation of Wabash County with assistance from the Lilly Endowments GIFT VII initiative.

What we found was that Wabash County's population has been in decline since the late 1970's, and that this decline in population foretells of dire consequences for the communities that we love so dearly. The study authors also provided several recommendations on how to arrest and reverse this population decline, including a suggestion to work to develop one comprehensive, strategic plan for all the communities of Wabash County which evolved into our Imagine One 85 initiative.

Throughout the course of 2020, we worked to develop the Imagine One 85 initiative. We started the year with an RFP process that resulting in our I085 steering committee choosing Planning NEXT, a community and economic development planning firm based out of Columbus, OH.

Over the second half of 2020, our steering committee was hard at work setting the baseline expectations of the process we were undertaking and then started gathering feedback from community leaders and stakeholders while kicking off the technical data analysis as well. As we transition into 2021, we have been able to start engaging stakeholders in person and look forward to presenting our initial work to the community and building upon our efforts to Grow Wabash County!



Housing Committee

Grow Wabash County leads several housing development efforts in conjunction with our local partners across Wabash County. Since its inception, Grow Wabash County has partnered with and advised the Town of North Manchester on its Chester Heights subdivision which is underway and has several houses already constructed with more on the way in 2021.

Grow Wabash County also leads the City of Wabash's Housing Committee, which is comprised of a group of community stakeholders who advise Mayor Long and Grow Wabash County on needs, wants, and various other aspects as related to housing need in our community.

We currently have several housing projects underway – the redevelopment of the former Parkview Legacy Site, the development of the GDX site as we progress through the environmental remediation of the land, and several other properties that have been identified as potential housing projects. At least one of these projects should move forward and break ground in mid-2021.

Grow Wabash County also partnered with Indiana Landmarks and pledged **\$10,000** payable in 2021 to preserve 6 of the most historic houses and architecturally significant homes in a concentrated area out of 23 that came up for auction in City of Wabash in fall of 2020.

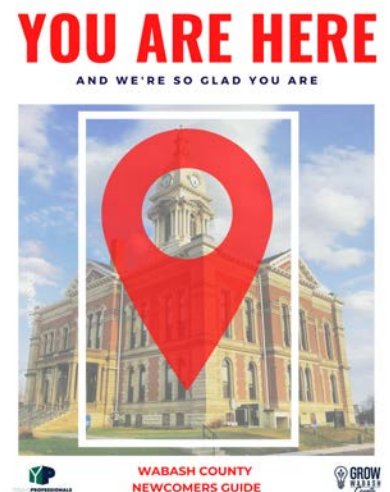
Finally, Grow Wabash County and our supporting foundation the Wabash County Business Alliance Foundation, Inc., in partnership with Mayor Scott Long & the City of Wabash have been working to acquire and redevelop the northside of East Market St between Allen and Huntington Streets. As of this writing, we own most of the properties on that street, and with the help of the City of Wabash Street Department have removed most of the structures.

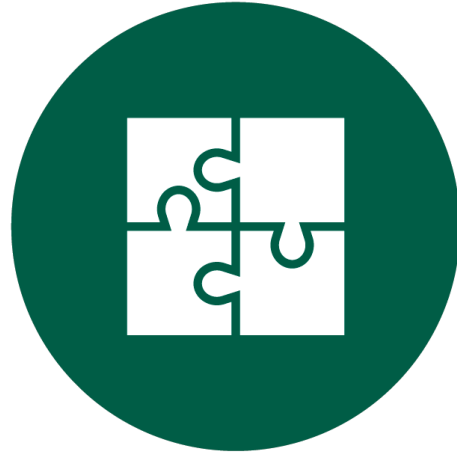
Once we finish the property acquisition process in Spring 2021, we will start an RFI process to redevelop the site into premium market-rate urban residential homes.

Attraction and Newcomers Efforts

Despite the pandemic we still welcomed new families and individuals into the Wabash County community. In an effort to help them get connected and feel welcomed the Young Professionals of Wabash County have been developing a newcomers guide to help people get settled and oriented in their new home. This publication will be made available in early 2021.

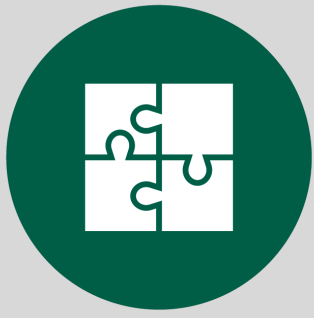
Grow Wabash County has also consistently helped to move the needle forward and address the single greatest threat to Wabash County: population decline. In early 2021, Grow Wabash County doubled down on those efforts by hiring a part-time Marketing and Talent Acquisition manager to add to the team. This position will be in charge of creating and executing programs aimed at recruiting, welcoming and retaining talent in Wabash County with the overall mission to help grow the population of Wabash County.





Investor Services





Grow Wabash County in the Media

18,475

total website hits

1,633

email subscribers

37

*press releases sent to local,
regional media*

83

*appearances in local,
regional news publications*

2,164

Facebook followers

Grow Wabash County Website

The Grow Wabash County website received a great deal of attention in 2020, and as such, our team took time whenever possible to better improve the look and accessibility of the website for ease of navigation.

COVID-19 Resource page

During the peak of the COVID-19 pandemic, there was new information coming out every day, often several times a day related to the virus, social distancing and requirements placed on businesses regarding capacity, masks and the like.

Grow Wabash County took the lead in establishing the **COVID-19 Resource page** on the Grow Wabash County website. Our team updated the webpage daily with important information from the Centers for Disease Control and Indiana State Department of Health. We became the touchstone for many in the community to receive updates about mask mandates, Back on Track Indiana stage progressions, capacity limits and more recently, vaccination schedules.

The COVID-19 Resource page remains the most visited webpage on the Grow Wabash County website.

Email Campaigns

Grow Wabash County remained a constant thread of networking and information for its investors as well as the community at large through our weekly email blast. Each week, this newsletter is updated with promos for upcoming GWC events as well as highlights of our investors that are doing great work in Wabash County. We also utilize this platform for specialized emails targeted at specific demographics and groups and to spotlight certain events or programs that require extra attention.

Total Subscribers: 1,633

Open Rate: 28% ; *Industry Average - 13%*

Engagement Rate: 9% ; *Industry Average - 3%*

Social Media

In this constant contact world, Grow Wabash County did their best to stay relevant and present on social media channels to encourage interaction as well as help followers stay informed.

Total Facebook Followers: 2,164

LinkedIn Connections: 67

State of Our Communities - Wednesday, February 12, 2020

Wabash County started 2020 with a whole list of exciting plans and goals in store for the year. We once again invited representatives from each of the county's five communities to revel in the successes of 2019 as well as establish how we as a county could grow together in 2020.

The 2020 State of Our Communities event also marked the launch of the Imagine One 85 initiative. Patty Grant, executive director of the Community Foundation of Wabash County, delivered the good news to the audience and was followed by one representative from each community as well as the county signing an enlarged copy of a letter devoting Wabash County's time and efforts to grow the Wabash county population.

Attendees: 207

Sponsors: 28

Speakers:

Allen Miracle, *Town of North Manchester*

Bob Ferguson, *Town of Roann*

Brian Hauptert, *Wabash County Commissioners*

Diana Heath, *Town of LaFontaine*

Keith Gillenwater, *Grow Wabash County*

Kristie Bone, *Town of Lagro*

Mayor Scott Long, *City of Wabash*

Patty Grant, *Community Foundation of Wabash County*



Salute to Agriculture - Wednesday, March 11, 2020

Agriculture is one of the most important industries in Wabash County, and every year Grow Wabash County makes a point of recognizing those farm families for keeping Wabash County going and growing. John Sampson from the Northeast Indiana Regional partnership was the keynote speaker and talked about the bright future ahead of the region and the incredible role agriculture and Wabash County play in that future.

The 2019 Farm Family of the Year was Flack farms, Inc., owned and operated by Steve and Lisa Flack. Not only has Flack Farms established itself as a local authority on various crops, the Flack family has also given much of their time and energy to supporting community efforts through various boards and committees.

Attendees: 126

Sponsors: 26

Keynote Speaker: John Sampson, *NE Indiana Regional Partnership*

2019 Farm Family of the Year: Flack Farms, Inc.



Annual Celebration Dinner - Thursday, October 9, 2020

After a difficult year in 2020, our investors and business community were ready to have something to celebrate. Grow Wabash County was fortunate enough to be able to organize and execute safely our Annual Celebration Dinner. And the community responded with great enthusiasm. We hosted a full house (with COVID precautions in place) and showed the resilience Wabash County has always had.

We honored such champions of Wabash County like Halderman Real Estate & Farm Management, Jim Smith and Doug Adams. The community reveled in how despite the pandemic, Wabash County still had the willingness and wherewithal to celebrate how far we've come and where we are going next.

Attendees: 249

Sponsors: 35

Award Recipients:

Halderman Real Estate & Farm Management, 2020 Business of the Year

Jim Smith, 2020 Volunteer of the Year

Doug Adams, 2020 Distinguished Citizen



Ribbon Cuttings & Groundbreakings

New beginnings are exciting times for both businesses and the Wabash County community as we welcome new innovations, people and enterprises. Even when things were tough in the middle of the pandemic, businesses still grew, still opened up and dared anything to stop them from being successful.

This year, we hosted ribbon cuttings and/or ground breaking ceremonies for: MPS Egg Farms, The Sanctuary, The Den at the Wabash County Museum, Hunter Estate & Elder Law, Alumni Field at Wabash High School, Hampton Inn by Hilton of Wabash, Grant Creek Mercantile and the Lighthouse Mission.



Advocacy & Legislative Engagement

Grow Wabash County is always proud to be a mouthpiece and advocate for our local business community. As the need for support from our various levels of government became more and more pressing during the COVID-19 pandemic, Grow Wabash County expanded its efforts to connect with legislators as well as provide platforms for our investors to connect with them as well.

Between March and December, Grow Wabash County hosted several virtual Q&A sessions with state and national legislators including: U.S. Rep Jackie Walorski, U.S. Senator Mike Braun, State Senator Andy Zay and State Representative Craig Snow.

During these virtual discussions, the elected officials gave updates on what was going in their respective chambers and answered questions from investors about issues important to them. We appreciated all of our elected officials for taking the time to connect with investors and we look forward to continuing these Q&A sessions as we go through the 2021 legislative calendar.



Educational Events

One of the benefits of being a Grow Wabash County investor is the chance to attend FREE educational events throughout the year to help them learn about a new skill to grow their businesses. This year, we welcomed Andrew Lamping to talk about "Social Media Marketing on a Budget," John Hoffman to talk about making creative window and merchandise displays and we even hosted a Virtual Leadership training with Jones Loflin in our partnership with the Honeywell Foundation.

Grow Wabash County Gift Checks

In the spirit of holiday giving and shopping local, Grow Wabash County experienced a large number of requests this year for Grow Wabash County gift checks. In the months and weeks leading up to the holiday season in November/December, Grow Wabash County printed close to 3,000 gift checks totaling over **\$56,000**. These checks are accepted at all Grow Wabash County investors and ensures the money is spent locally. Grow Wabash County also experienced an increase in gift checks orders outside of the holiday season as a way to honor teachers and other essential workers throughout the pandemic.

Organizational Development

Grow Wabash County is committed to ensuring that we provide the best organization to serve our community as best we can. To that end, a well-trained and credentialed staff is an important aspect of this strategy, and Grow Wabash County supports the career development of all of our team.

In January 2020, our project manager, Chelsea Boulrisse attended the 40-hour Ball State University Economic Development course in Muncie, IN. This course is accredited by the International Economic Development Council and provides a great overview of not only the basic building blocks of our profession but also current trends that are affecting what we do.



Tenille Zartman, Grow Wabash County's Vice President, attended virtually Year 2 of the University of Oklahoma Economic Development Institute, which is a three year program designed to equip economic development practitioners with the requisite knowledge to not only best serve their communities, but also to fulfill the prerequisite requirements to be able to sit for the Certified Economic Developer (CEcD) credential.

Finally, Grow Wabash County President and CEO Keith Gillenwater attended several virtual continuing education courses, including the Mid-America Economic Development Council Competitiveness Conference, Economix 2020, Indiana Economic Development Association, and others to maintain his CEcD credential and continually hone his skill sets. Staff also participated in several on-going webinars throughout the year.

Facility Upgrades

While dealing with the fall-out of COVID-19, we also made several improvements and changes to our operations and office space to ensure the ease of use of our space and safety for our staff and visitors.

We instituted increased cleaning and sanitization protocols for our building in conjunction with the City of Wabash, increased the cleaning frequency of our public spaces, and modified our space usage agreements for our community room requiring users to clean/sanitize all spaces et al.

With the assistance of the Wabash County Commissioners, we also upgraded our conference room to install a Zoom Rooms Conferencing appliance to allow larger groups to use Zoom more effectively in our space.





A SPECIAL THANK YOU TO...

Our Fee for Service Partners:

- City of Wabash
- Town of North Manchester
- Wabash County

Our many grant partners:

- Community Foundation of Wabash County
- Duke Energy
- Indiana Economic Development Corporation
- Indiana & Michigan Power
- Indiana Office of Community and Rural Affairs
- NIPSCO
- Northeast Indiana Regional Partnership
- Wabash County United Fund
- Wabash Valley Power Alliance

Our incredible Grow Wabash County Investors

2020 certainly tested the strength and resiliency of our local business community. Grow Wabash County has been endlessly amazed by the generosity of businesses and companies that lent a helping hand as well as the agility of our business owners to adjust on the fly to what soon became called "the New Normal." We are proud to be a partner in helping our investors not only survive, but THRIVE

And especially all of the essential frontline workers that stepped up to serve and protect our community during the COVID-19 pandemic.

Our essential workers are the ones that propelled Wabash County forward even during the darkest of times. Grow Wabash County salutes those hard workers and pledges to continue to find ways to support our frontline workers and the companies that kept the world turning during 2020



2020 INVESTOR LIST

- 105.9 the BASH/ Dream Weaver Marketing
- 10X Engineered Materials, LLC
- 85 Hope
- 950 Speakeasy & Bistro
- Advanced Ag Resources
- Agro-Chem, Inc.
- AgVenture McKillip Seeds, Inc.
- American Health Network
- Andy Zay
- Anytime Fitness
- Arc of Wabash County
- Atlas Building Services, Inc.
- Autumn Ridge Rehabilitation Center
- B. Walter & Co
- **Badger Tool Belts***
- Bailey's Pizza Parlor
- Barnes & Thornburg LLP
- **Bass and Bucks Inc.***
- Beacon Credit Union
- Belgian Draft Horse Corp. of America
- Benson & Son LLC
- Besiege LLC
- Betty Temple, Inc.
- Bippus State Bank
- **Black Sheep Events & Design***
- Bob Vanlandingham
- Borders & Beyond
- Bott Mechanical Company, Inc.
- Bowen Center
- Brady Benefits & Associates, LLC
- Briner Building, Inc.
- Brush Dental
- Bucheri McCarty & Metz LLP
- Builder's Mart
- Building Contractors Association of Northeast
- Bulldog Battery Corporation
- Burger King
- Business Technology Group, LLC
- Canal Street Investments, LLC
- Cannonball Lanes
- Carole & William Konyha
- Ceres Solutions Cooperative, Inc. (North central coop)
- Charley Creek Gardens
- Charley Creek Inn
- City of Wabash
- Comfort Keepers
- Community Foundation of Wabash County
- Congresswoman Jackie Walorski
- Consumer 51, LLC
- Countryside Veterinary Hospital
- Crossroads Bank
- Crystal Glass & Exteriors, LLC
- D & J Radabaugh Construction, Inc.
- Daniel's Place, Inc
- Dave's Carpet Cleaning
- Dawes & Pugh CPA's, LLC
- Denney Motor Sales, Inc.
- Douglas C. Lehman, PC
- Downs Tandy & Petruniw, P.C.
- Dr. James Ford Historic Home
- Duke Energy
- Eads & Son Bulldozing Inc.
- Eagle Outdoor Advertising
- EcoWater Systems
- Edward Jones - Office of Steve Weir
- Edward Jones - Office of Wayne Denger
- Edward Jones & Company - Office of Amy Sullivan
- **Ellen's Bridal & Dress Boutique***
- Emily Boardman
- Family Optometry
- First Farmers Bank & Trust
- First Friends Early Learning Ministry
- First Merchants Bank
- Fisher & Ireland
- Flagstar Bank
- **Flight1 Aviation Technologies***
- Flow-Tech Plumbing & Heating, Inc.
- Ford Meter Box Company, Inc.
- Fowler, Bing M., Family Dentistry
- Freedom Academy
- Friermood Tire & Alignment
- G6 Communications LLC
- Gaunt & Son Asphalt
- Gebhart Holdings
- Global Precision Parts, INC
- Gogolewski, Dean & Julie
- Goodfella's Pizza
- Goodfella's Pizza (NM)
- Gorman Center for Orthodontics
- Grandstaff-Hentgen Funeral Service
- Green Hat
- Grow Wabash County
- Guenin Law Office
- Halderman Real Estate and Farm Management
- Hands of Hope, a division of Family Service Society, Inc.
- Hank's Construction, Inc.
- Heartland Career Center
- Heartland REMC
- Hidden Diamond Homes, LLC



2020 INVESTOR LIST

- Hipsher Tool & Die
- **Hoffman's Nursery & Landscaping, Inc.***
- Holiday Inn Express
- Honeywell Center
- Honeywell House
- Honeywell Public Golf Course
- Hoosier Chiropractic, LLC
- Hoosier Jiffy Print
- Hoosier Payment Solutions
- Hunter Estate & Elder Law
- Indiana American Water Company
- Indiana Farm Bureau Insurance
- Indiana Michigan Power
- Indiana Tech
- Indiana University Kokomo
- INGUARD
- INGUARD Health
- Intrasect Technologies
- Ivy Tech Community College
- J&K's Mega Pet!
- J.M. Reynolds Oil Co., Inc.
- Jason Callahan
- **Jessica Parrett - Indiana Farm Bureau Insurance***
- Jim Smith
- Jim Widner
- JL Hurt
- John H. Stephens RLS
- Jones Contracting, Inc.
- Keith & Carrie Gillenwater
- Kellam, Inc.
- KenapocoMocha Coffee Shop
- Kirtlan Automotive Machine & Repair, Inc.
- Kitchens Plus
- Lafontaine Town Council
- Lagro Town Board
- Learn More Center
- LIFE Center
- Lighthouse Mission Thrift Store
- Living Essentials
- Living Well in Wabash County COA, Inc.
- Lundquist Appraisals & Real Estate
- Lutheran Health Network
- M & B Body Shop, Inc.
- Manchester Alive
- Manchester Community Schools
- Manchester University
- Marilyn Custer-Mitchell
- Martin Yale Industries, LLC
- Mattern, Robert DDS
- McDonald's Restaurant
- Metz Title Company
- Miami - Wabash Paper
- Midwest Eye Consultants, PC
- Miller's Merry Manor
- Milliner Printing Co., Inc
- MJV Group, Inc.
- Modoc's Market
- Mosier's Tarps
- MPS Egg Farms
- MSD - Metropolitan School District of Wabash County
- Nameless Catering Company
- Nancy J's Fabrics
- Nicole A. Howard Photography
- NIPSCO
- North Manchester Town Council
- Northeast Indiana Regional Partnership
- Northern Indiana Aviation
- Northwestern Mutual
- Novae Corp
- Office Concepts, Inc.
- Ohh My! Cakes
- OJI Intertech
- Oswalt-Thomas Sales & Service
- Owens Corning - Thermafiber, Inc.
- Papa John's Pizza
- Paperworks Industries, Inc.
- Parker and Katie Beauchamp
- Parkview Physicians Group (Corporate Office)
- Parkview Wabash Hospital
- Pathfinder Services, Inc.
- Paul Speicher-Ralph Naragon Advised Non-Permanent Fund
- Penguin Point (NM)
- Penguin Point Restaurant
- Perry ProTech
- Pettit Printing, Inc.
- Pleasant Home Farm, Inc.
- POET Biorefining
- Poole's Meat Market
- Precision Medical Technologies, Inc.
- Purdue Extension
- Quality Electric, Inc.
- Rabb/Kinetico Water Systems
- Rea Logan & Co., LLC
- Real Alloy Recycling, Inc.
- Real Alloy Specification, Inc.
- REALTORS Association of Central Indiana, Inc.
- Red Earth CPA, LLC.
- Redemption Development, LLC



2020 INVESTOR LIST

- Regency Properties
- Regional Chamber of Northeast Indiana
- Republic Services
- Rick's Auto
- River Bend Farms, LLC
- Roann Town Council
- Robert Halderman
- Roofs Unlimited
- Rosen Farms, Inc.
- Rotam Tooling Corporation
- Ruth Ann Masiongale
- Schlemmer Brothers Metalworks
- Skyline Business Technology, LLC
- Spirit Wear
- SRT Aluminum
- Staffing Resources, Inc.
- Star Excavating
- State Representative David A. Wolkins
- Steve and Lisa Ford
- Stock+Field
- TAD Holdings Inc.
- Terrill & Co., Inc.
- The Hagerman Group
- The Honeywell Foundation
- The Paper of Wabash County, Inc.
- The Zacher Company
- Thorne Insurance
- Tom Latchem
- Town of North Manchester
- Transform Consulting Group
- Trophy Center Plus
- Troy Eads Excavating, LLC.
- TTG Equipment
- Twenty
- U.S. Representative Jim Banks
- United Tool Company, Inc.
- Vanderpool Law Firm, P.C.
- Vernon Health & Rehabilitation
- Visit Wabash County
- Wabash Appliances & Electronics
- Wabash Carnegie Public Library
- Wabash Castings, Inc.
- Wabash City Schools
- Wabash County Christmas Spirit
- Wabash County Clerk's Office
- Wabash County Commissioners
- Wabash County Council
- Wabash County Courthouse
- Wabash County Department of Health
- Wabash County Farm Bureau, Inc.
- Wabash County Historical Museum
- Wabash County Solid Waste Management District
- Wabash County United Fund, Inc.
- Wabash County YMCA
- **Wabash CrossFit***
- Wabash Eye Health & Vision Center
- Wabash First United Methodist Church
- Wabash Friends Counseling Center
- Wabash Hardware & Rental
- Wabash Marketplace, Inc.
- Wabash MPI/Carver, Inc.
- Wabash Plain Dealer
- Wabash Valley Abstract Company, Inc.
- Wabash Valley Chrysler LLC
- Walmart
- Webb's Family Pharmacy 3, LLC
- Wellbrooke of Wabash
- Wendt & Sons
- Wesley Academy
- **White Rock Recreation***
- White's Residential & Family Services, Inc.
- Wings Etc.
- Wireless Zone of Wabash
- WKUZ - KISS FM 95.9
- **Wooden Ivy Boutique and Floral***
- Zartman, Tenille & Silas
- **ZenBusiness***

*New Investors in 2020**